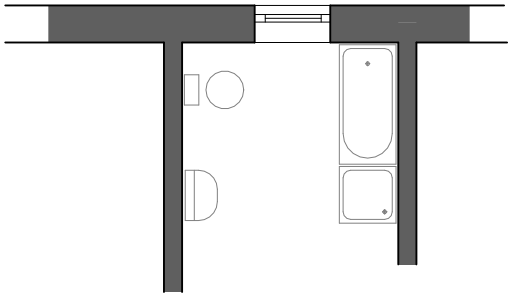
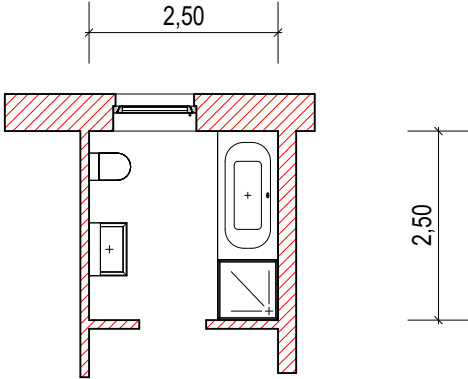
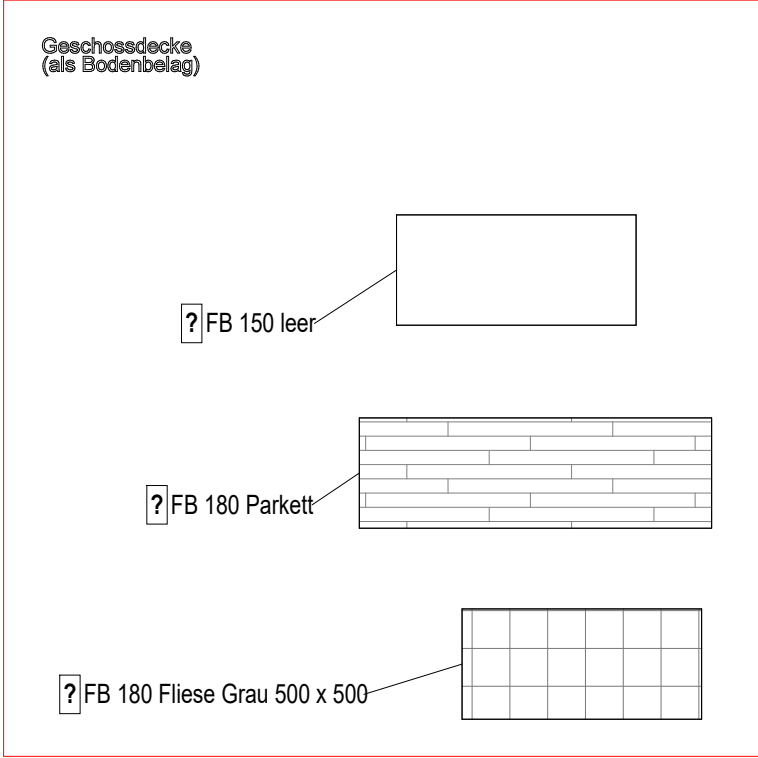
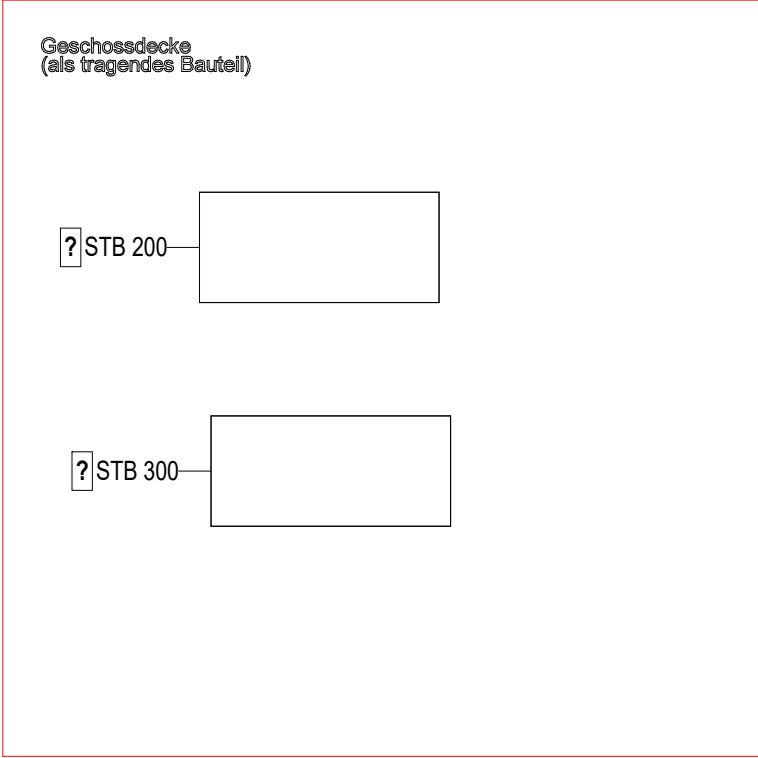


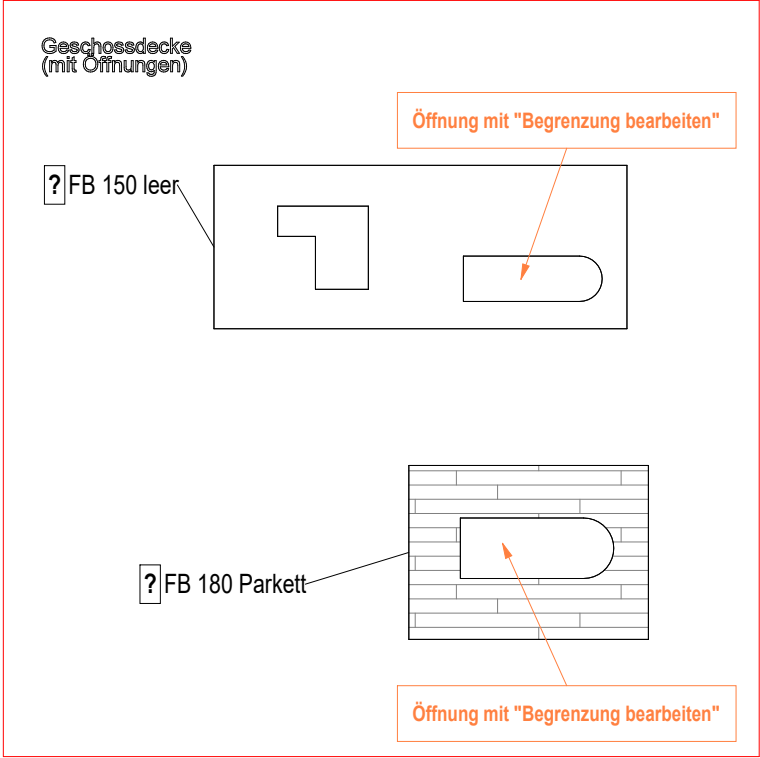
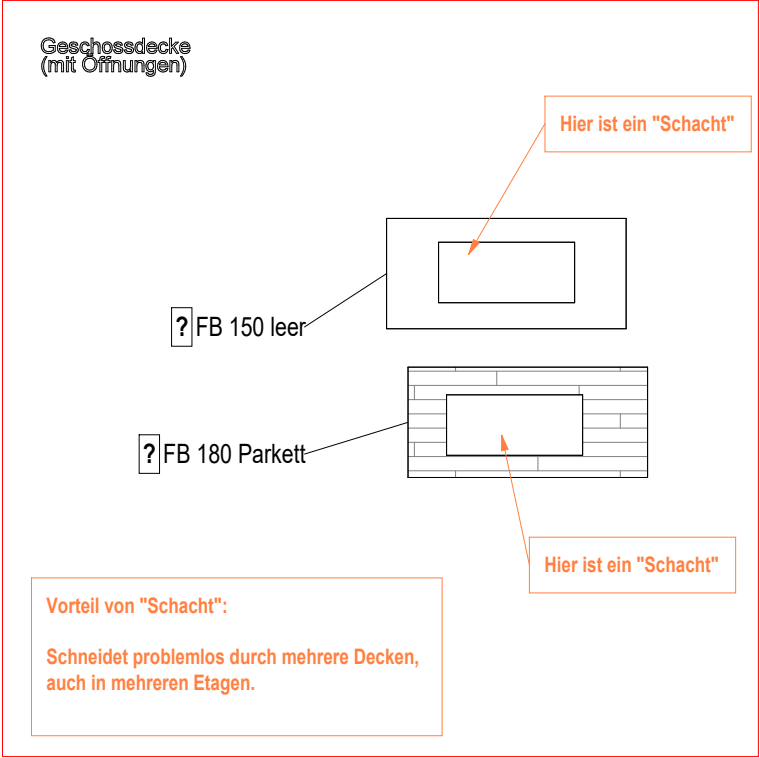
Bad 2D-Skizze

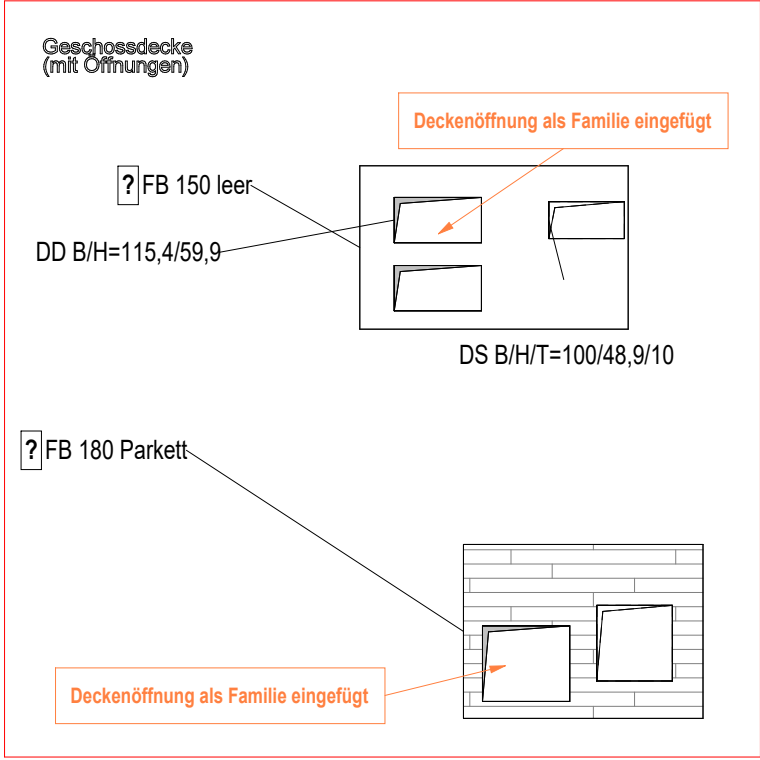
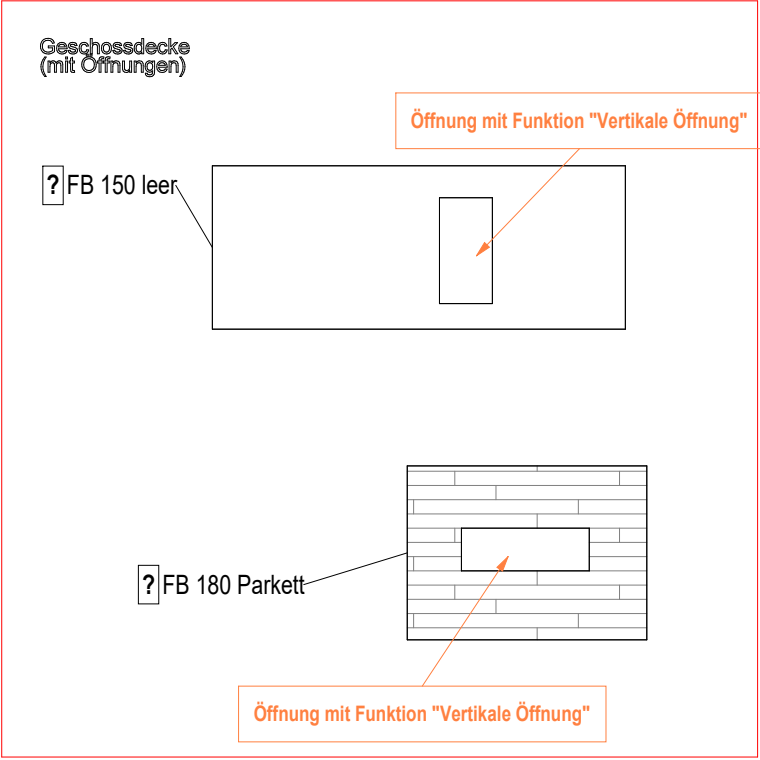


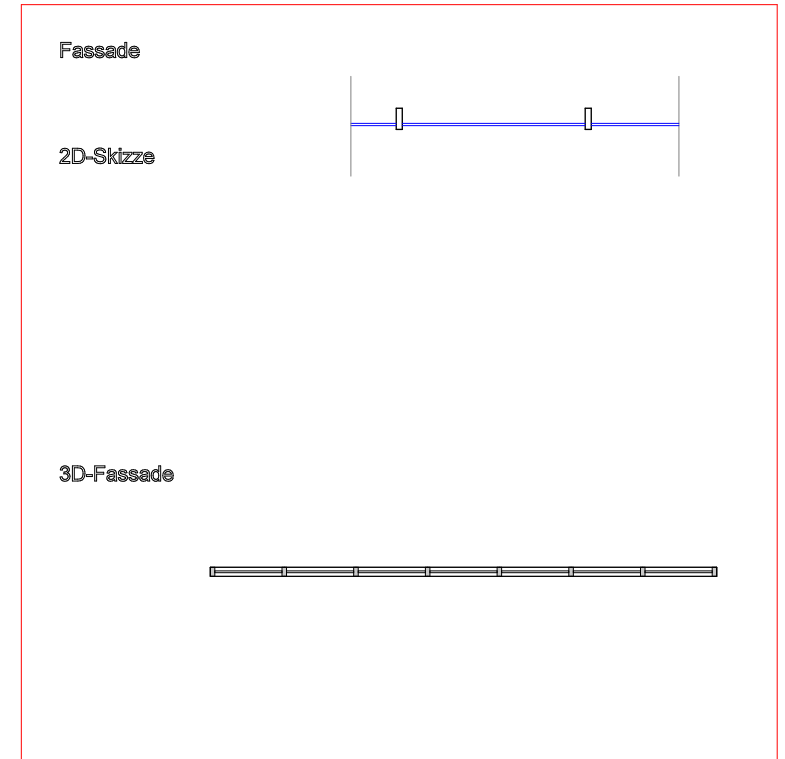
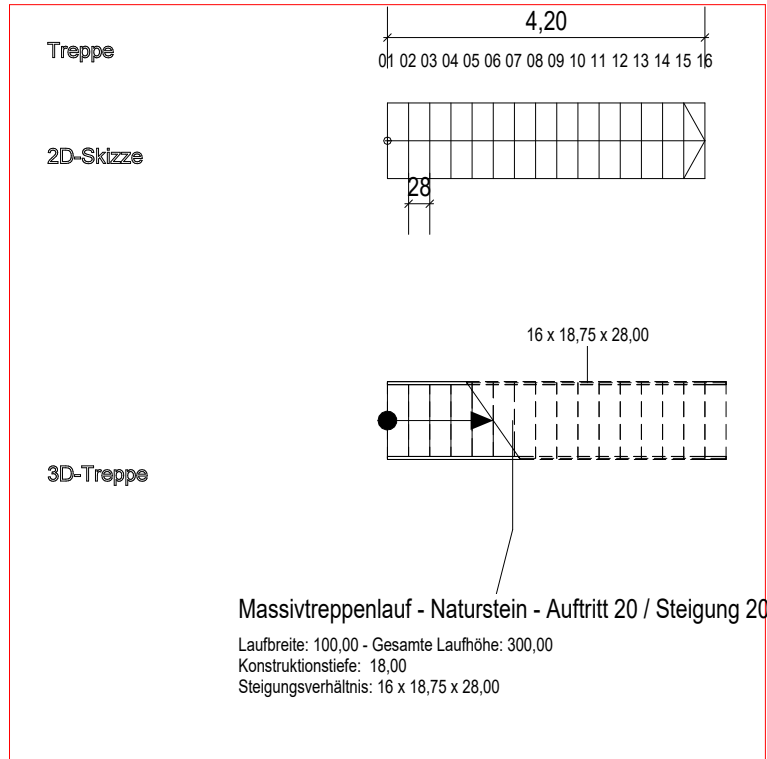
Bad 3D

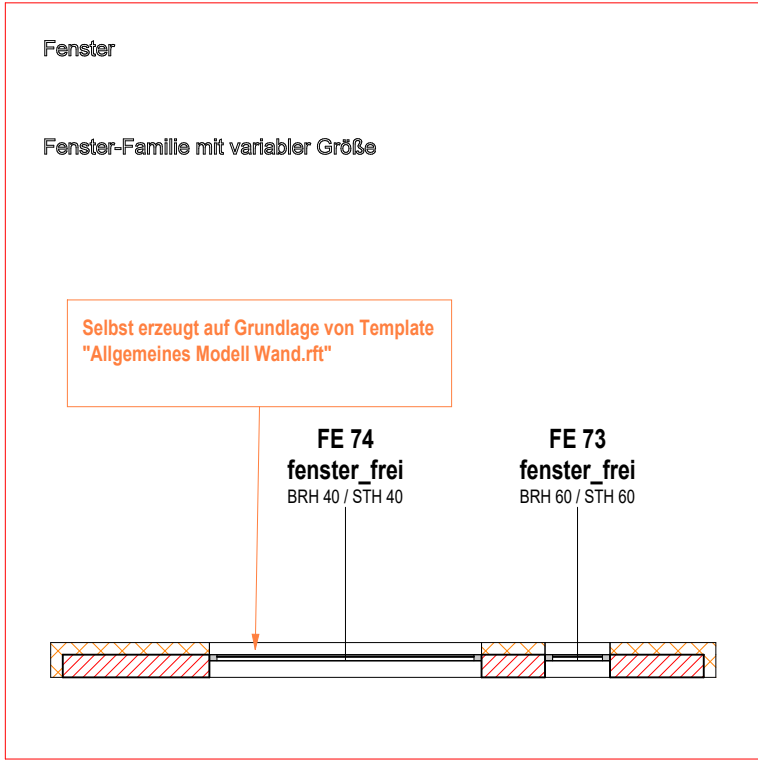
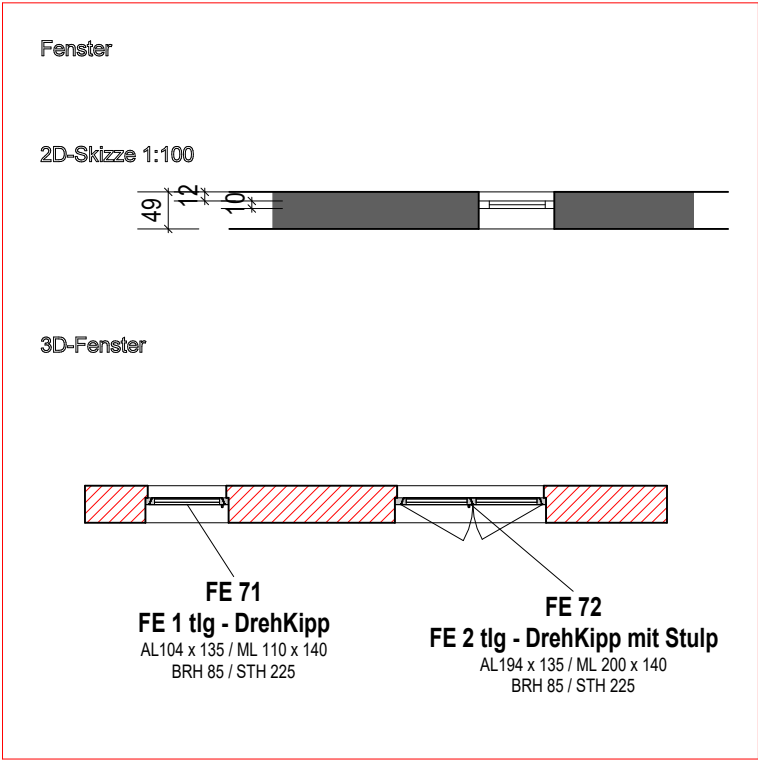




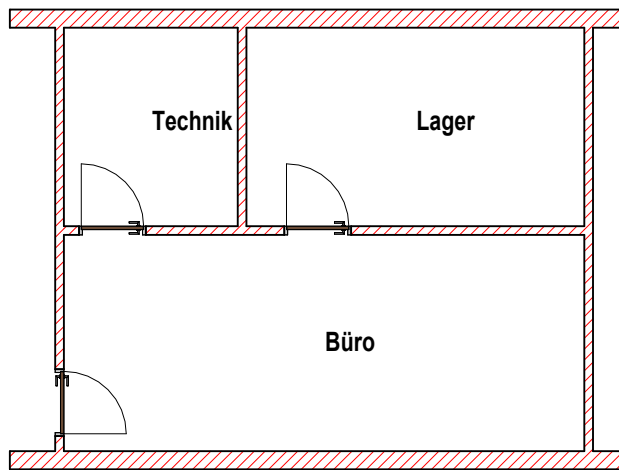




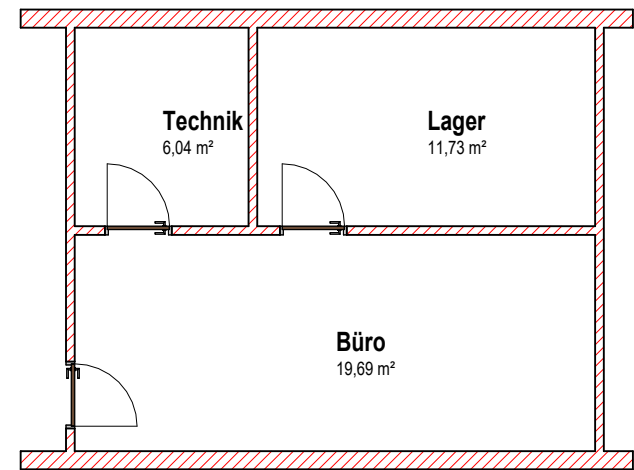




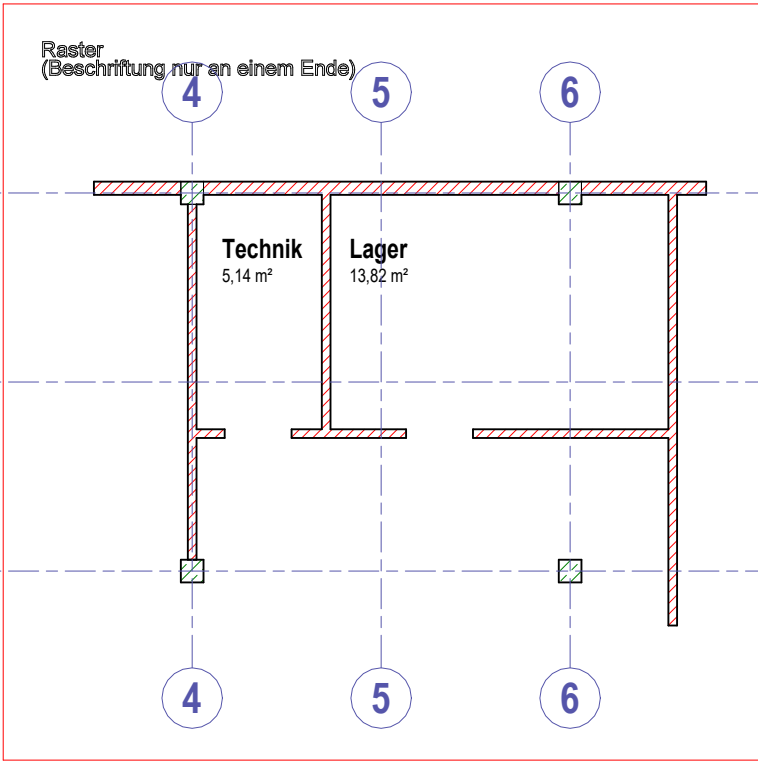
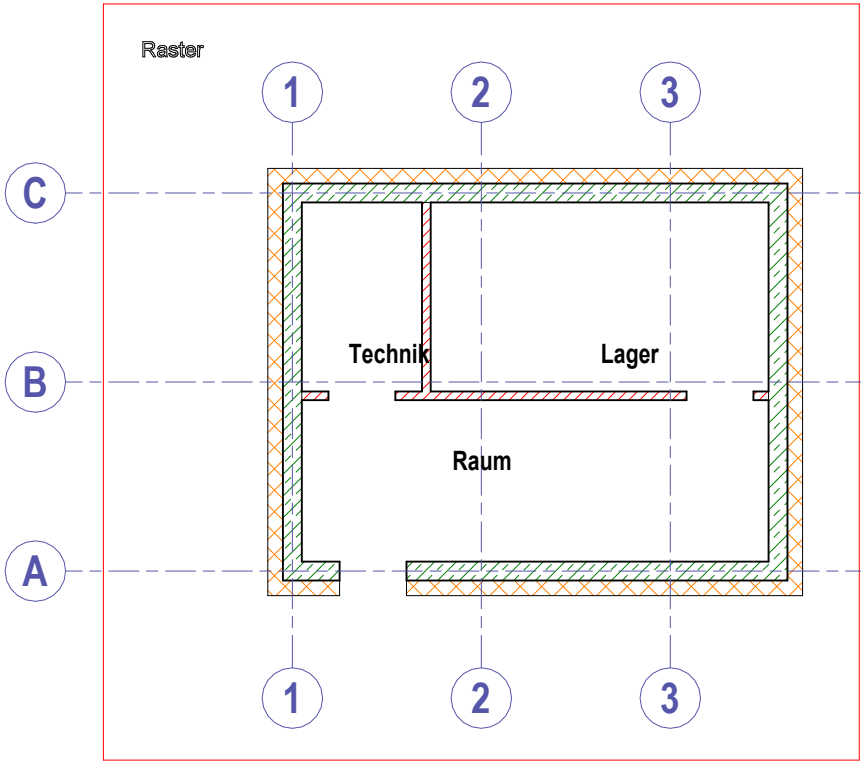
Raum  
(Beschriftung nur mit Raumname)



Raum  
(Beschriftung mit Raumname und Fläche)







Work 1

10 20 40

Wände mit neutralem Material

In der frühen Phase des Entwurfs wollen wir noch nicht über Materialien und Details nachdenken.

10 20 40

Diese Wände sind nur 1m hoch, wie z.B. Brüstungen.

Sie werden dünner als die anderen Wände dargestellt, da sie im Grundriss nicht geschnitten sind.

Work 2